

Press Release

23/02/2022

High quality ELESA magnets

Elesa magnets are an easy, efficient and safe solution designed for all applications where non-permanent fixing is required. Equally, Elesa magnets are highly suitable for when it's not appropriate to drill holes, but fixing is needed. Ideal for machine protection, automation sectors and control systems.

The Elesa range presents magnets in different materials, such as hard ferrite (HF), aluminium nickel cobalt (AlNiCo – AN), samarium cobalt (SmCo – SC) and neodymium iron boron magnets (NdFeB – ND). All of which meet numerous application needs.

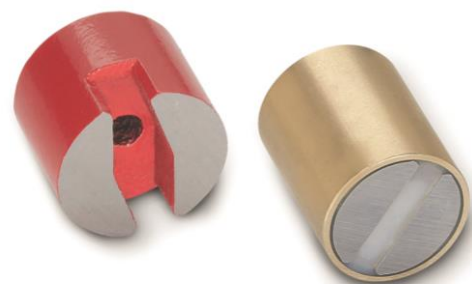
Covering a wide variety of shapes, dimensions, and performances, the Elesa magnets range includes cylindric magnets, U-shaped magnets with pass-through hole in different dimensions also for small spaces; shielded and unshielded magnets for high and heavy duty applications.

In addition to ease of use, Elesa magnets are praised for offering additional important advantages that result in savings on cost and time.

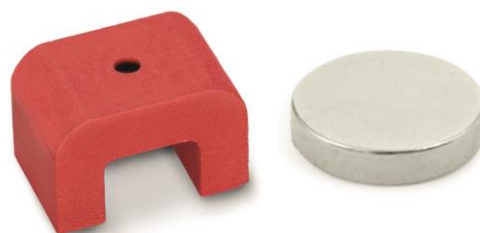
Product technical data sheets, along with drawings and tables with codes and dimensions are available on our website [elesa.com](https://www.elesa.com).



Flat magnets RMA and RMH



Cylindric magnets RMQ and RMM



Horseshoe magnets RMR and
Unshielded flat magnets RMA-US

1941 – 2022

Over 80 years at the service of the mechanical industry

Elesa designs and manufactures the widest range of standard components for industrial machinery and equipment: handwheels, crank handles, clamping elements, adjustable and lever handles, handles, position indicators, indexing plungers, screws, washers, levelling feet and supports, hinges, connectors and clamps, latches, accessories for hydraulic systems, modular roller tracks, castors and wheels, magnets and vibration mounts. Made of engineering plastics and metal, offering high performance and reliability, ergonomics and with a modern and functional design, ELESА products can be used in the most varied applications of the mechanical industry. The care invested in R&D features with a service strongly focused on the customer. Established in 1941 with headquarters in Monza, with 13 foreign subsidiaries, Elesa exports its products to over 60 countries all over the world.

Press Box

Contact: Fabio Invernizzi

E-mail: fabio.invernizzi@elesa.com

ELESА S.p.A.

Via Pompei, 29 - 20900 Monza (MB) Italia

tel. +39 039 2811.1 - info@elesa.com

[elesa.com](https://www.elesa.com)

STANDARD MACHINE ELEMENTS WORLDWIDE

elesa®